



AFEDJ

American Friends of the
Episcopal Diocese of Jerusalem

Building Hope in the Holy Land

25 Old Kings Hwy. No., Suite 13
Darien, Connecticut, 06820

Address Service Requested

Questions about AFEDJ or our work?

Please be in touch!

Eileen Spencer, Executive Director
espencer@afedj.org

Diana Branton, Director of Communications,
Bearing Witness Program Director
dbranton@afedj.org

Sarah Schofield-Mansur
Associate Director of Individual Giving
sarah@afedj.org

Betsy Wilson, Sr. Manager of Operations
bwilson@afedj.org

RECEIVE NEWS DIRECTLY TO YOUR INBOX!



To keep up with the stories of the humanitarian institutions that they serve, scan the QR code to join the monthly e-newsletter. Together we're transforming lives in the Holy Land. afedj.org/connect/stay-in-touch-with-the-work-of-american-friends

WHERE THERE IS LOVE THERE IS HOPE

Amidst the ongoing conflict between Hamas and Israel, your support is needed more than ever. Join us in sharing love and hope this holiday season through our "Where There is Love, There Is Hope" year-end fundraising campaign.

Together, we can make a meaningful impact on the lives of countless individuals served by the humanitarian institutions of the Episcopal Diocese of Jerusalem, especially during these challenging times. With your generous support, we can foster hope and brighter futures for those in need.

With love at the heart of our mission, we have the power to bring hope to countless lives in the Holy Land, even amidst adversity. Together, let's stand strong, continuing to spread love and hope throughout the year and making a lasting difference for those affected by the recent conflict. Thank you for being a beacon of hope and for joining us on this transformative journey.



WHERE THERE IS

LOVE

THERE IS

HOPE



AFEDJ

American Friends of the
Episcopal Diocese of Jerusalem

www.afedj.org

Building Hope in the Holy Land

October 25, 2023

✠ CRISIS AT AHLI ARAB HOSPITAL IN GAZA ✠

Ahli Arab Hospital suffers tragic strikes as Israel-Hamas War continues to claim thousands of casualties on both sides; Gaza now Ground Zero for Humanitarian Catastrophe. Here is the Damage Report.

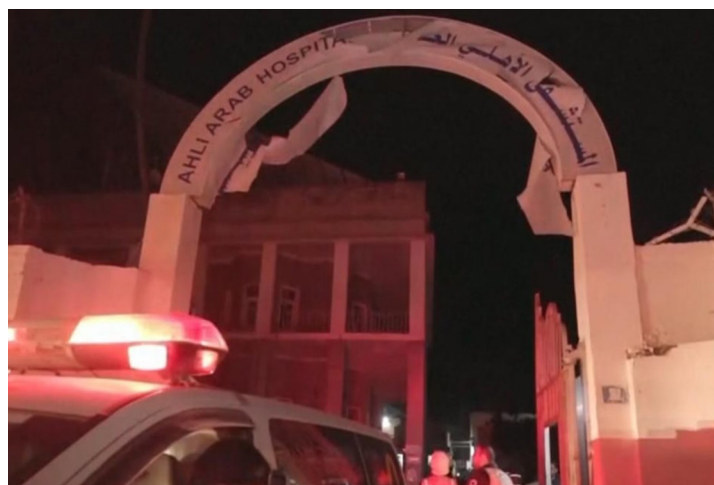
“IN WAR WE LIVE HOUR BY HOUR”

These were the harrowing words spoken to AFEDJ by Ahli Arab Hospital Director Suhaila Tarazi just a handful of days into the Israel-Hamas war. Never before were they more true than they are at this time.

On October 7, a sudden outbreak of conflict in the Holy Land sent shockwaves around the world, resulting in a significant loss of life, injuries, and forced displacements. Since the onset of the Israel-Hamas conflict, the number of those affected has sharply risen, reaching into the tens of thousands due to the significant escalation of hostilities. Among the casualties, innocent civilians, particularly women and children, have become ensnared in the deadly crossfire. Gaza became ground zero for a humanitarian crisis of epic proportions when the region's supply of food, fuel, electricity, humanitarian aid, and even water was cut off.

On October 14, we learned that Ahli's Cancer Diagnostic Center was struck by rocket fire, damaging the top two floors of the Ultrasound and Mammography Units and wounding four members of the staff. It became clear that no place in Gaza was safe. Tragically, three days later on October 17, Ahli's courtyard took a direct missile hit, causing the deaths and injuries of hundreds of civilians taking refuge there, many of them children.

The attack that claimed so many civilian lives occurred on the same day that Archbishop Hosam Naoum, along with the Patriarchs and Heads of 13 Churches, had set apart as a day of global fasting and prayer for peace and



Ahli Arab Hospital after the October 17 blast

reconciliation in the Holy Land.

On Friday, October 20, AFEDJ staff and Trustees gathered together on a Zoom call with Archbishop Hosam, where we received a status update on Ahli Hospital and the damage it has suffered. The Archbishop confirmed that damage from the October 17 incident was largely concentrated in the area of Ahli's courtyard. Though the surrounding buildings suffered some infrastructure damage, no buildings collapsed, and no staff or patients were killed. The hospital force-closed immediately, and all existing patients were evacuated to nearby hospitals.

Two days later, after the bombing of nearby St. Porphyrius Orthodox Church in Gaza City, the dedicated doctors and staff of Ahli Hospital returned and partially reopened the hospital's operating theater to minister to those blast victims most critically in need. Their

Our sincere gratitude goes out to you, our valued partners. Your support provides a critical beacon of hope during this horrific crisis. Together we have raised over \$600K for Ahli Hospital since the Israel-Hamas conflict began. On behalf of the Diocese of Jerusalem, the staff of Ahli Arab Hospital, and AFEDJ:

THANK YOU.

unwavering commitment reflects the resilience of Ahli Hospital staff, and reaffirms its healing mission. Since then, they've been working round-the-clock for operational stability despite limited critical resources and the worsening shortage of medical supplies.

The impact of these distressing events is not limited to Gaza alone; it extends throughout the entirety of the Diocese of Jerusalem. All the institutions that we serve have felt the repercussions, either directly or indirectly. Some have suffered closures for safety or accessibility reasons, others are operating at reduced capacity, and a few are facing increased demand for vital services and supplies. The Diocese has never needed your help more than it does right now.

A gift to AFEDJ earmarked for “where the need is greatest” grants the diocese the flexibility and agility needed to respond swiftly to evolving needs and emerging crises.

HUMANITARIAN SITUATION BRIEF

The ongoing escalation in Gaza is resulting in thousands of casualties. According to the situation report from the Episcopal Diocese of Jerusalem, as of 3pm on October 24, 5,700 Palestinians have been killed and 16,000+ injured; the majority of those are women and children. There are an estimated 1.4 million internally displaced persons (IDPs) currently in Gaza. 4% of Gaza's hospitals are non-functioning and 65% of primary healthcare centers are closed. 24 hospitals are in the evacuation zone. The remaining hospitals are operating at 150% or more of their capacities. Hospitals are on the brink of collapse due to shortages of medications, equipment, staff, energy sources, etc. The destruction of hospitals and health facilities has resulted in the death of thousands and have deprived the wounded of essential life-saving medical interventions.

SITUATION AT AHLI ARAB HOSPITAL

Ahli's staff is currently maintaining an around-the-clock presence at the hospital, providing urgent medical care for those physically injured, with special attention to children who have been significantly traumatized by the violence. Ahli has received elective cases referred by other hospitals that have been overwhelmed beyond reasonable capacity with thousands of injured patients. The Burn Care unit has received hundreds of children with severe burns.

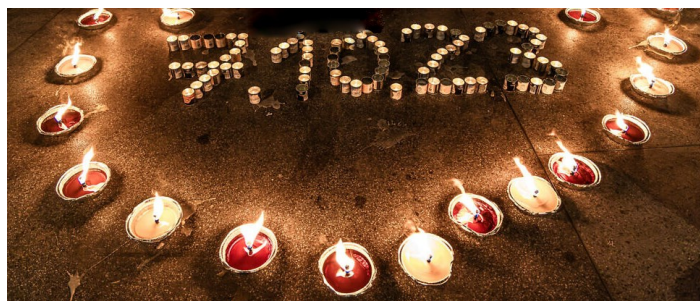
The two missiles that hit the hospital caused severe damage to the hospital's ambulance, medical equipment, and diagnostic machines (ultrasound, mammography, ventilation system, an operating theater table, and anesthesia machine). There is also damage to the infrastructure of some of the hospital departments including the diagnostic center, the ventilation system, the ultrasound room, the mammography room, the administration and management offices, the hospital entrance and courtyard, the hospital parking area, many windows, the exterior arch, etc. Moreover, four of the hospital staff who were wounded needed operational surgeries, and some staff lost their homes.

Over the past three weeks, the hospital has provided treatment and medical interventions to thousands of wounded, which consumed much of the hospital's existing stock of medicine, supplies, fuel, and other critical resources. Thousands of people need psychosocial support to work through trauma. Ahli needs new medical equipment and devices to replace what has been damaged. Supplies are needed for rehabilitation care, prolonged treatment for the burned and wounded, hygiene kits, food and drinking water for patients, staff, and their families. Additional doctors, nurses, and support staff are needed for the round-the-clock shifts. Also needed: renovation of the severely damaged departments, rooms and infrastructure, and a new ambulance to replace the damaged one.

CURRENT RESPONSE AT AHLI ARAB HOSPITAL

Despite the challenges and damage, the hospital staff continues to provide urgent medical care for those physically injured and traumatized. Ahli Hospital is receiving hundreds of people, particularly children, at the physical rehabilitation department and expects to receive thousands more within the coming weeks with severe wounds and broken bones. Moreover, Ahli continues to receive new pediatric patients affected by inadequate

hygiene, partly because of large amounts of refuse not collected, lack of potable drinking water, and food shortages. As a result, the children present with chest infections, diarrhea, rashes, and scabies. Such admissions have averaged 150 cases per day. Ahli has also opened its doors to family members of the wounded who have no other place to go. The Hospital has become their refuge of last resort.



THE DIOCESE OF JERUSALEM NEEDS YOUR SUPPORT. DONATE TODAY.

Secure online donations to support Ahli Hospital may be made online at www.afedj.org/give or by check to **AFEDJ, 25 Old Kings Highway North, Suite 13, Darien, CT, 06820.** AFEDJ ensures that 100% of designated funds go directly to the specified institution.

ABOUT AHLI ARAB HOSPITAL

Founded in 1882, Ahli was a Baptist Medical Mission from 1954 to 1982, at which time operations were taken over by the Anglican Diocese of Jerusalem (1982-present). Ahli Arab Hospital is the oldest hospital and the only Christian hospital in Gaza. A humanitarian organization of the Episcopal Diocese of Jerusalem in the center of Gaza City, Ahli is a haven of peace and hope in one of the world's most troubled areas. Ahli adopts a rights-based approach and provides healthcare regardless of faith, gender, social class or political affiliation. In Arabic, its name means "The Arab People's Hospital."

WAYS TO GIVE



BECOME A MONTHLY DONOR Join the Olive Tree Circle, our new community of monthly donors committed to sustaining the vital ministries of the Diocese of Jerusalem.

WHERE THE NEED IS GREATEST Donations designated for "where the need is greatest" enable AFEDJ to meet urgent needs and respond to emerging opportunities.

DESIGNATED GIFTS 100% of designated donations go directly to the institution you specify.

DONOR-ADVISED FUND Do you have a donor advised fund? Why not consider AFEDJ as a beneficiary of your generosity? Contact Executive Director Eileen Spencer to learn more: espencer@afedj.org.



BECOME A JERUSALEM SAINT Your legacy gift ensures Diocese of Jerusalem ministries will serve the next generation and beyond. Contact Executive Director Eileen Spencer to learn more: espencer@afedj.org.

GIVE THROUGH THE MAIL Send your donation by check to: AFEDJ, 25 Old King's Hwy No., Suite 13, Darien, CT, 06820

MATCHING GIFTS Many companies match their employees' charitable contributions. Consider matching funds to double your gift. Contact Executive Director Eileen Spencer to learn more: espencer@afedj.org.

GIVE A GIFT IN HONOR OF or IN MEMORY OF

Whether you donate online or by mail, AFEDJ recognizes gifts offered in honor of or in memory of a friend or family member by sending the recipient a special card in the mail. Give in honor of someone special.

LEARN MORE AT AFEDJ.ORG/GIVE